



01-08-20

WARNING: PLEASE READ ALL THE INSTRUCTIONS BEFORE FITTING THESE ROCKERS TO YOUR FACTORY GM LS7 HEADS

THESE INSTRUCTIONS / WARNINGS SUIT ROLLER ROCKER SET TYPES:

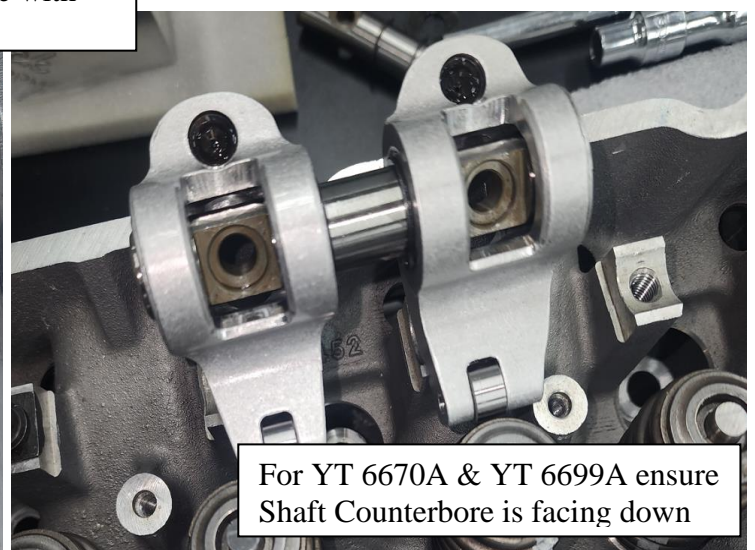
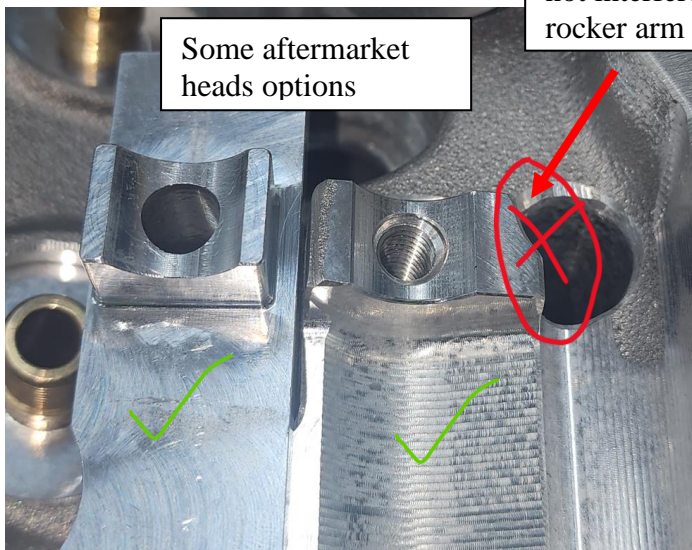
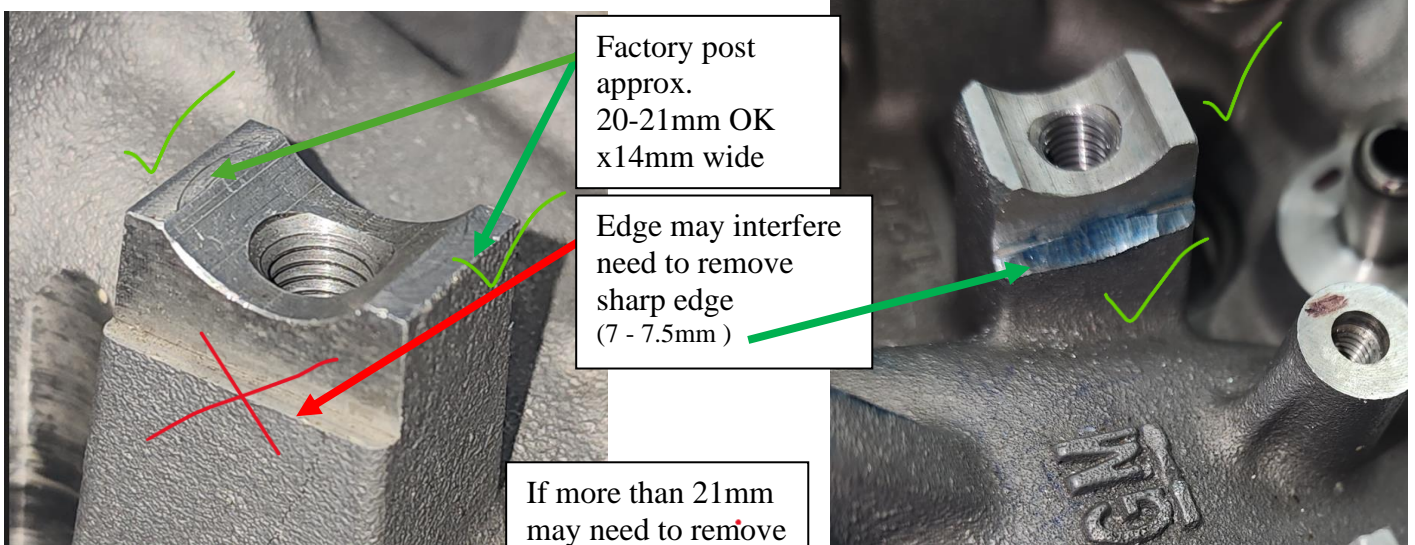
YT 6670 / YT 6670A & YT 6699A.

TO SUIT GM LS7 FACTORY SPEC VALVE TRAIN / CYLINDER HEADS.

NOTE 1. MANY AFTERMARKET CYLINDER HEADS ARE MADE WITH VARIATIONS FROM THE FACTORY SPECIFICATIONS EG: VALVE SPACINGS, VALVE ANGLES, STUD SPACINGS, STUD THREADS, PEDESTAL HEIGHTS & POSITIONS. THEREFORE, IT MAY NOT BE SUITABLE TO USE THESE ROCKERS UNLESS MODIFICATIONS ARE MADE TO THE CYLINDER HEADS

NOTE 2. These rockers should be installed by a **qualified engine builder or mechanic**, including any minor cylinder head modifications that may be required for correct fitment.

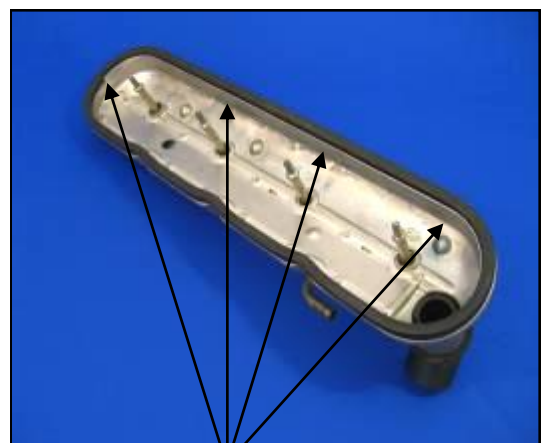
NOTE 3. Many cylinder heads may vary in the “depth of clearance” on the “in-cast” rockers post as shown below. You must ensure that you have enough clearance for the rocker arms to rotate freely. If not, you may need to do some minor dressing/grinding of the sharp corners either side of the cylinder head rocker post. *******DO NOT GRIND THE ROCKER ARMS*******



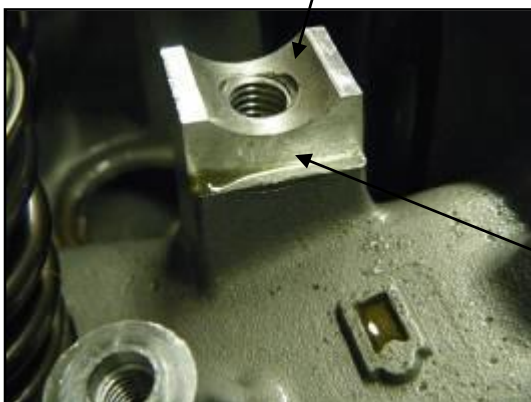


Key Installation points

- The (16) Steel mounting “D” Saddles supplied, **must be used** to ensure correct radial fitment of the rocker shaft into the rocker cradle of the factory LS7 cylinder head.
- Rocker Geometry changes can only be done by altering valve length, or using lash caps.
- Lifter pre-load can only be changed by altering push rod length.
- Extreme care should be taken not to drop the “D” Saddles or shims into the engine when fitting or removing the rockers.
- Place the “D” Saddles in position on the cylinder head first, using light grease to secure them.
- Fitting a cylinder at a time, place (2) of the supplied capscrews into the inlet and exhaust rocker assembly first, then lower assembly into position (taking care not to dislodge the “D” Saddles and shims)
- Set the lash, with the particular cylinder’s piston at TDC between compression and power stroke.
- Once you have zero lash, there should be between a ½ to ¾ turn left in the mounting screws before they tighten down in position (**Torque Settings: 25ft / lbs**)
- If not, longer or shorter pushrods need to be used to achieve the correct lifter preload.
- With all LS7 rockers you will require rubber valve cover spacer /gasket (YT 5132) (**When using STD rocker covers**)



THOROUGHLY CLEAN SURFACE
SOAK SEAL IN HOT WATER TO MAKE MORE FLEXIBLE.
START WITH THE JOIN AND WORK AROUND FIT SUPPLIED NUTS TO BOTTOM OF ROCKER COVER MOUNTING BOLTS AND TIGHTEN



Note: Some LS7 cylinder heads have variations in Rocker post machining and may require some further relief to clear the bottom of the Yella Terra rocker.